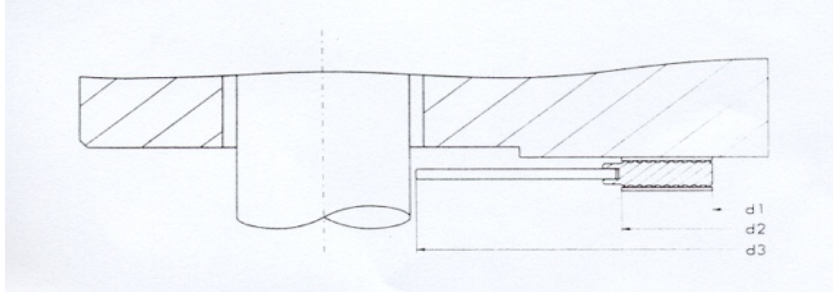


BMS 37 - Camprofile Gaskets M18L and M20L to **DIN 2697**  
Dimensions & Tolerances

Issued by: A D Senior  
Date: 1st Jan 2011  
Page: 1 of 1



Nominal Pipe Dimensions (mm)	d 1 (mm)	d 2 (mm)	d 3 (mm)					
			PN					
			64	100	160	250	320	400
10	22	40	56	56	56	67	67	67
15	25	45	61	61	61	72	72	77
25	36	68	82	82	82	82	92	103
40	50	88	102	102	102	108	118	135
50	62	102	112	118	118	123	133	150
65	74	122	137	143	143	153	170	192
80	90	138	147	153	153	170	190	207
100	115	162	173	180	180	202	229	256
125	142	188	210	217	217	242	274	301
150	165	218	247	257	257	284	311	348
(175)	190	260	277	287	284	316	358	-
200	214	285	309	324	324	358	398	442
250	264	345	364	391	388	442	488	-
300	310	410	424	458	458	-	-	-
350	340	465	486	512	-	-	-	-
400	386	535	543	-	-	-	-	-

Tolerances:

DN (mm)	DN (inch)	d 1	D 2	d 3		
15	200	1/2	8	+ / - 0.4	+ / - 0.8	+ / - 0.8
250	600	10	24	+ / - 0.8	+ 1.5 - 0.8	+ / - 0.8
650	850	26	34	+ / - 0.8	+ / - 1.5	+ / - 0.8
900	1500	36	60	+ / - 1.25	+ / - 1.5	+ / - 0.8

Camprofile Thickness = 4.00 + 0 / - 0.25mm or 3.00mm + 0 / - 0.25mm

**Note:**

Novus Sealing Camprofiles to DIN 2697 are supplied with a standard cam pitch of 1.5mm.